

Sorting & Categorizing

P
Preschool



Table of Contents

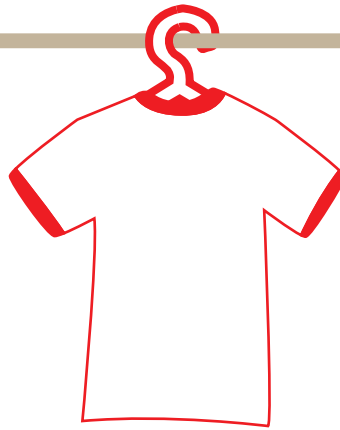
Sorting and Categorizing

T-Shirt Twins
What's in the House?
Objects in the Bathroom
Objects in the Kitchen
Objects in the Backyard
Objects in the Bedroom
Bigger or Smaller?
Teapot Twins
What's on the Desk?
Match the Pairs of Socks
Count and Classify!
Winter Clothing
Spring Clothing
Summer Clothing
Fall Clothing

Certificate of Completion

Want more workbooks? Join Education.com Plus to save time and money.
<http://www.education.com/education-plus/>

T-Shirt Twins



Can you match each shirt with its twin?

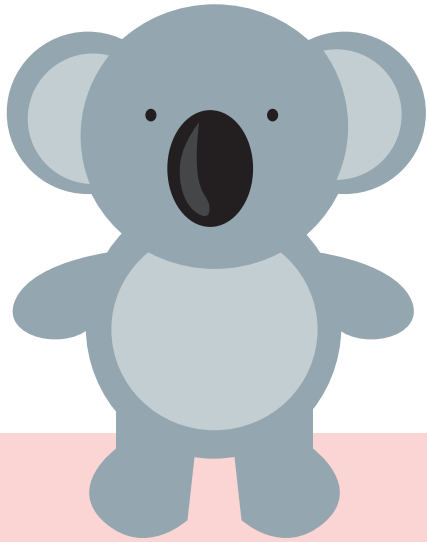


What's In The House?

Cross out what should not be in the house.

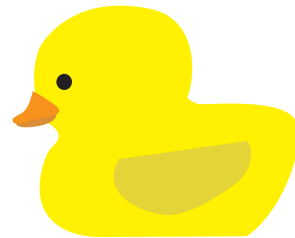


What else should be in the house? Draw it!



The Bathroom

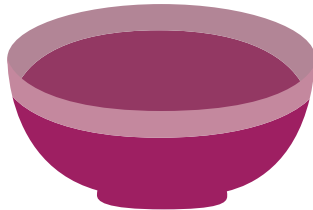
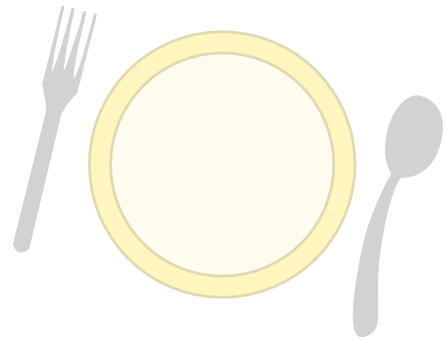
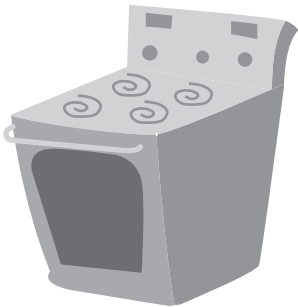
Kris the Koala is cleaning his house!
Can you help him put away the objects that
belong in the **bathroom**?
Circle the objects that belong in the **bathroom**.





The Kitchen

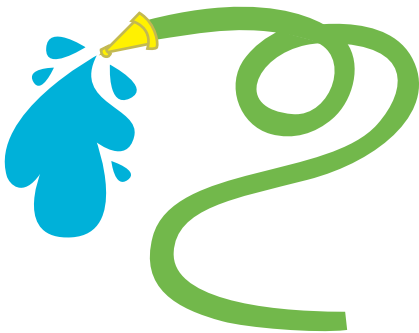
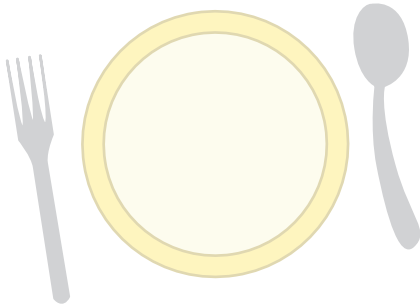
Kris the Koala is cleaning his house!
Can you help him put away the objects that
belong in the **kitchen**?
Circle the objects that belong in the **kitchen**.





The Backyard

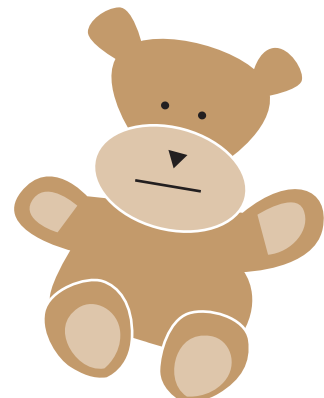
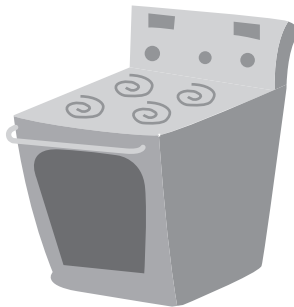
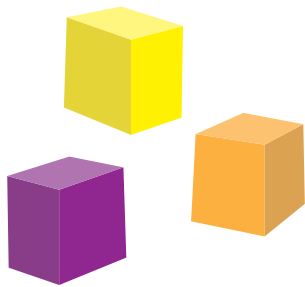
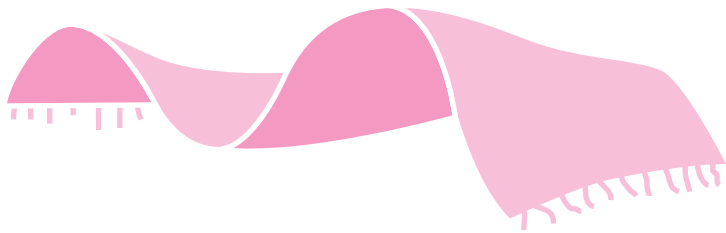
Kris the Koala is cleaning his house!
Can you help him put away the objects that
belong in the **backyard**?
Circle the objects that belong in the **backyard**.





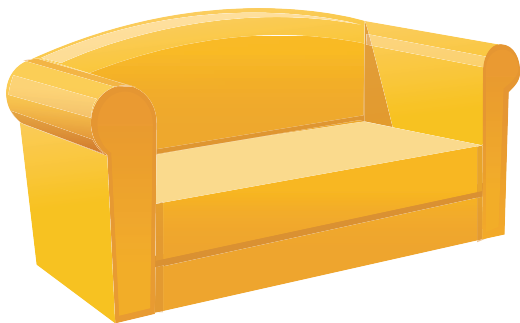
The Bedroom

Kris the Koala is cleaning his house!
Can you help him put away the objects that
belong in the **bedroom**?
Circle the objects that belong in the **bedroom**.



Bigger or Smaller?

Look at the household items in each box,
and circle the one that is bigger!



Teapot Twins

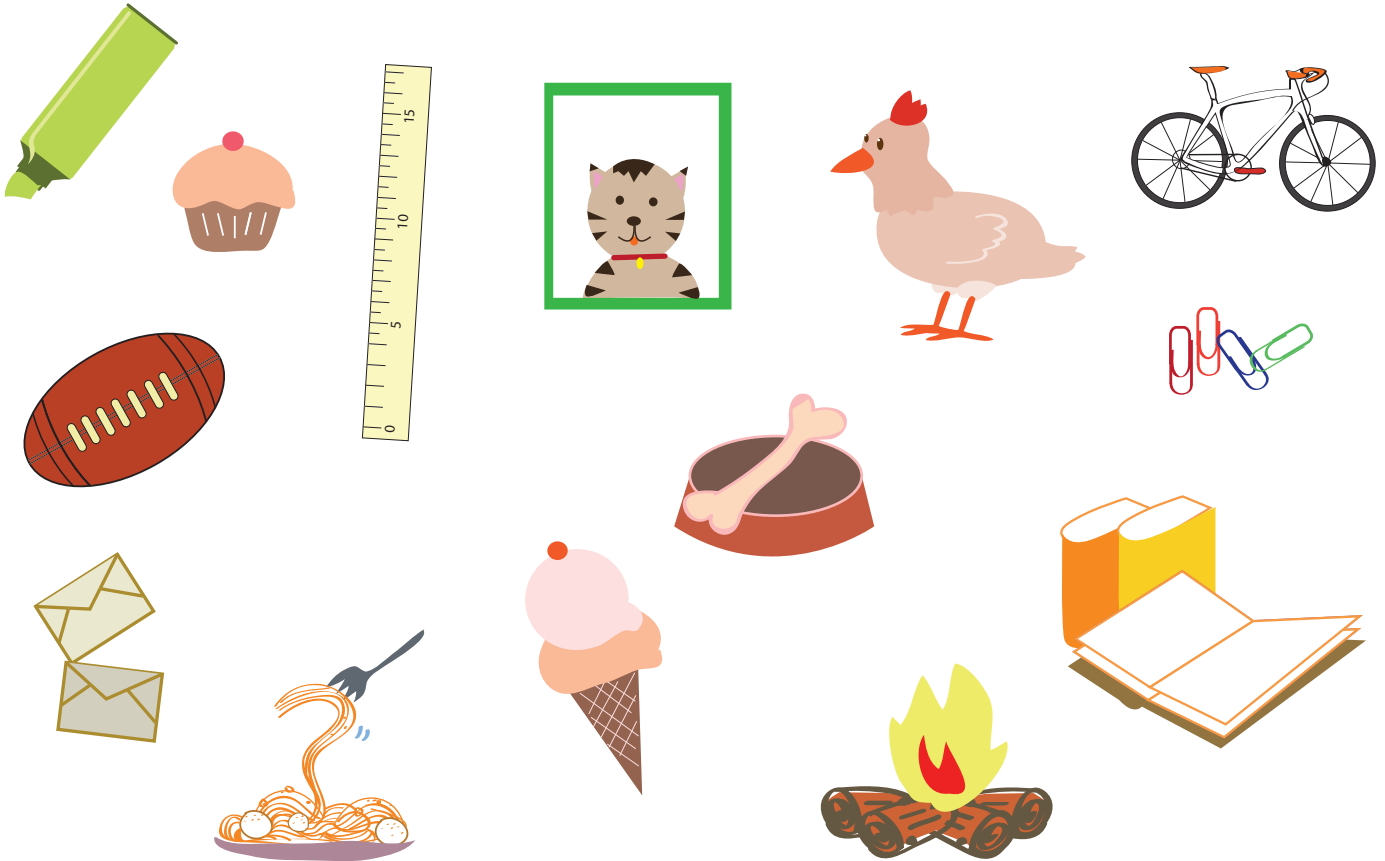


Can you match each teapot with its twin?



What's On The Desk?

Cross out what should not be on the desk.



What else could be on the desk? Draw it!

Match up all the pairs to find the one odd sock



Count and Classify!

Look at the toys and answer the questions below.



How Many?

Have wheels? _____

Don't have wheels? _____

Make music? _____

Are animals? _____

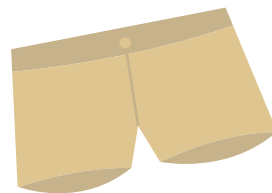
Are not animals? _____

Are for the water? _____



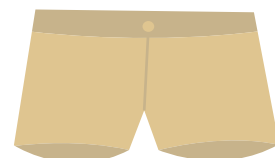
Winter

In the winter it is cold and sometimes it snows!
Circle the clothes you wear in the winter.





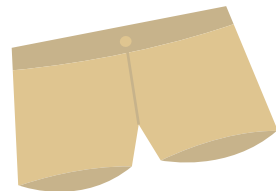
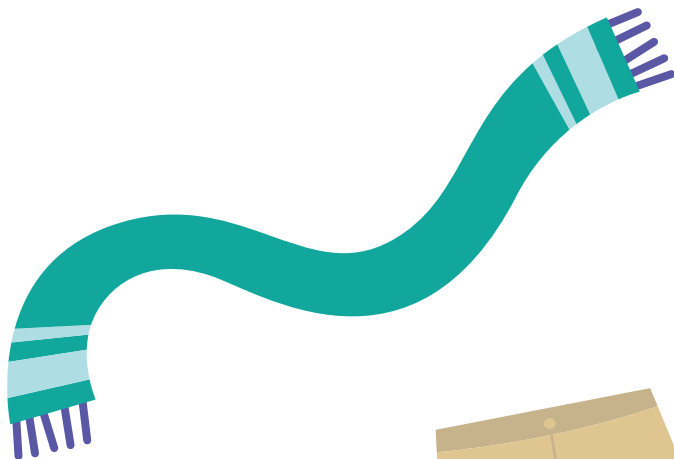
In the spring it is warm but sometimes it rains!
Circle the clothes you wear in the spring.





Summer

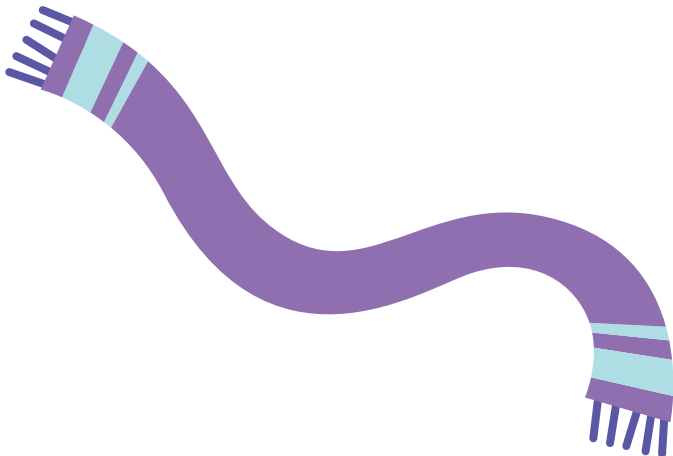
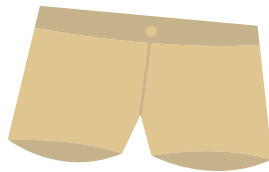
In the summer it is sunny and hot!
Circle the clothes you wear in the summer.



An illustration of a fall landscape. At the top left are two grey clouds. In the center, the word "Fall" is written in large, bold, brown letters. To the right of the word are two orange maple leaves. Below the word is a green hill, and at the very bottom is a brown ground line.

Fall

In the fall it is cool and maybe even windy!
Circle the clothes you wear in the fall.





Great job!

is an Education.com math superstar

