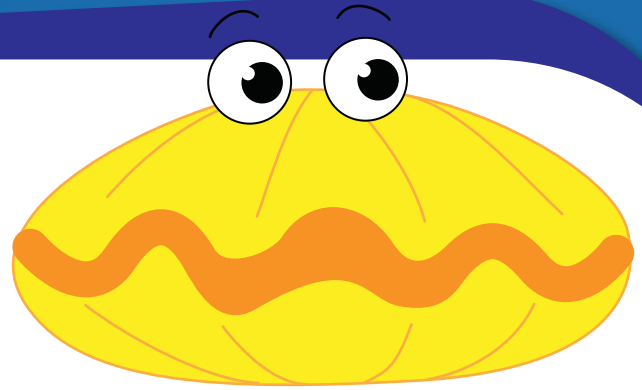


Under the Sea Math

P
Preschool

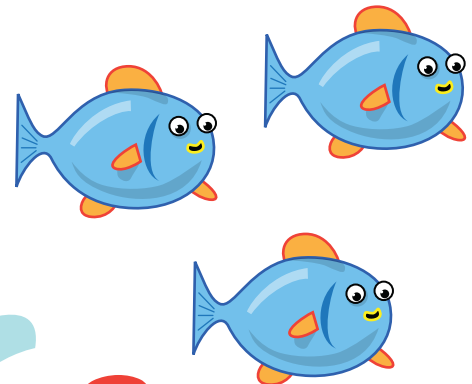
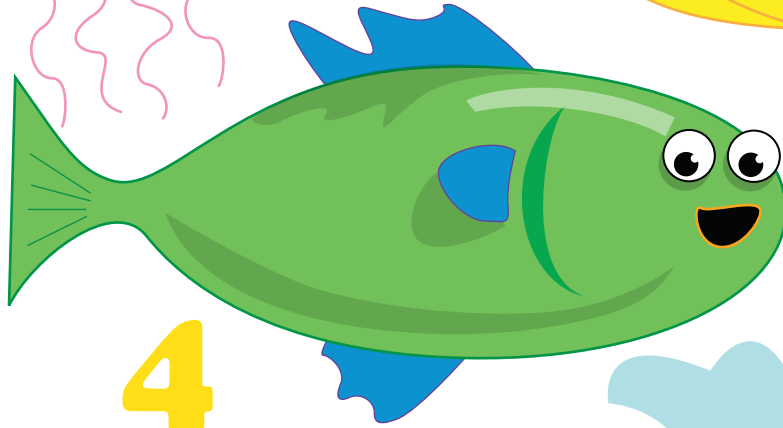


2



8

7



5

4



3

9

6

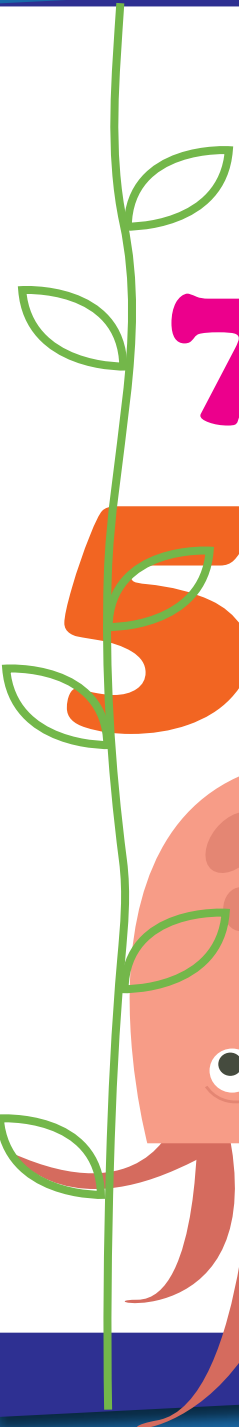
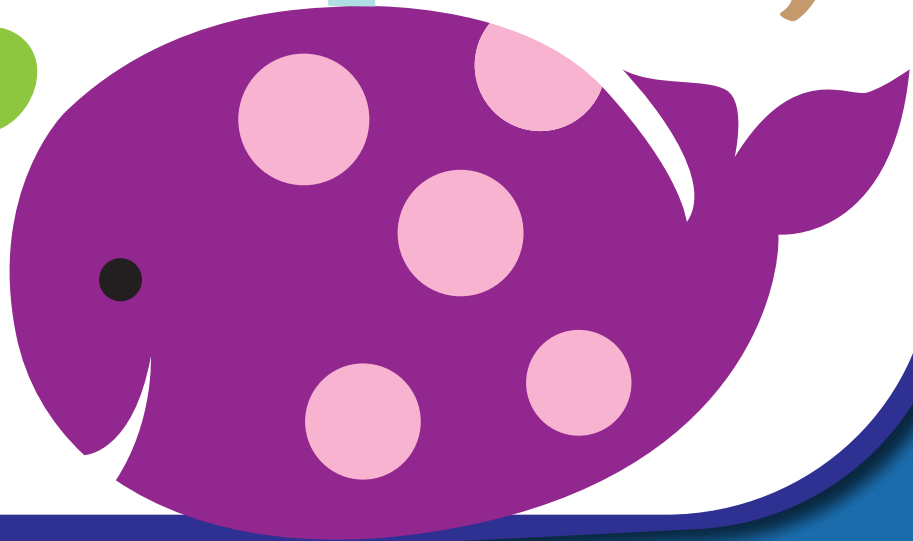


Table of Contents

Under the Sea Math


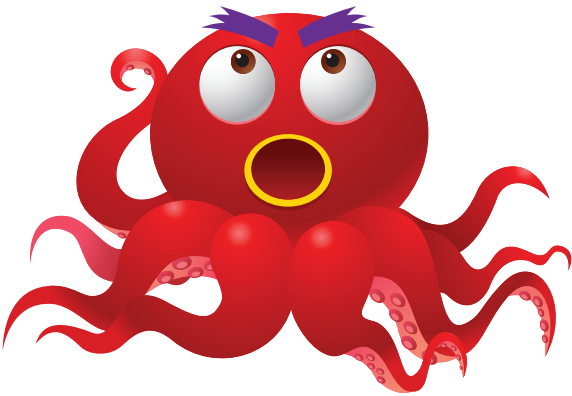
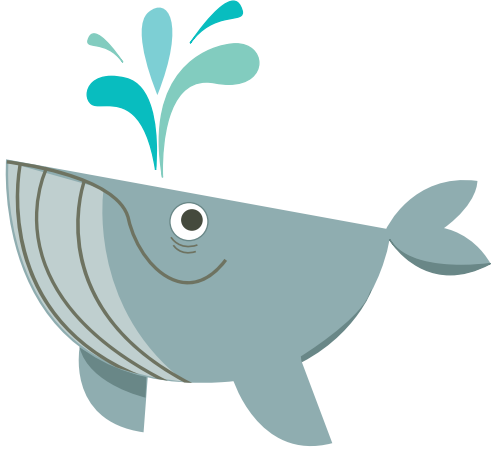
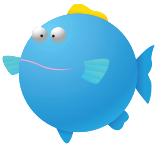
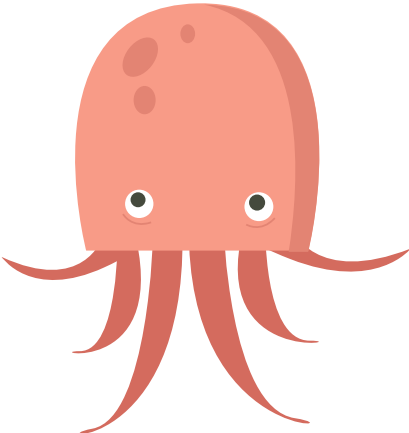

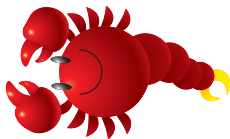
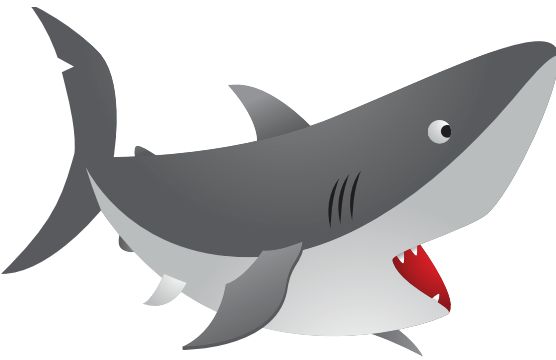
Bigger or Smaller?
Whale Twins
Recycling at the Beach
Oliver the Octopus
Color the Starfish
Find the Matching Set
Let's Compare!
How Many Sea Shells Can You Find?
Color by Number
How Many Are There?
Preschool Math: Subtraction
Connect the Dots

Certificate of Completion

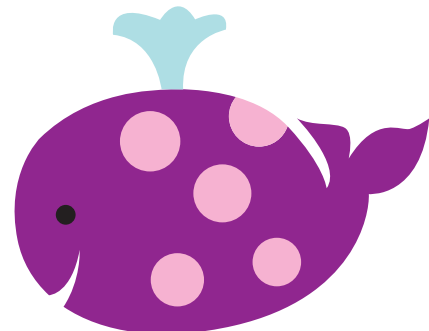
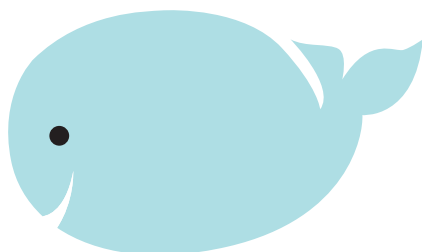
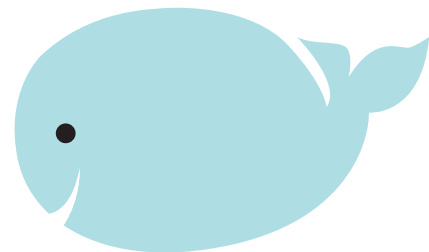
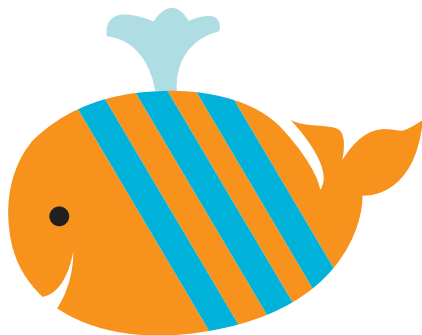
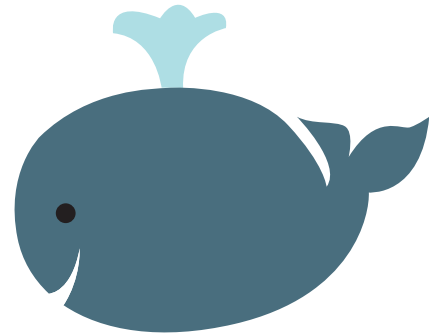
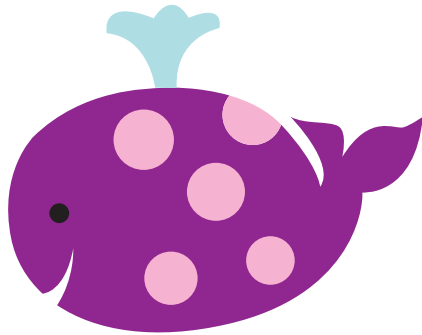
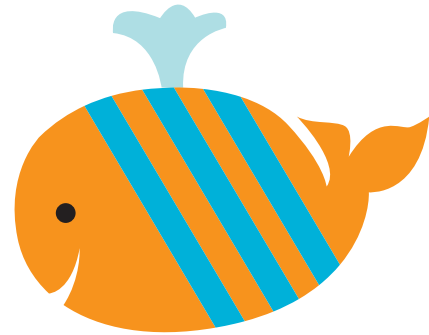
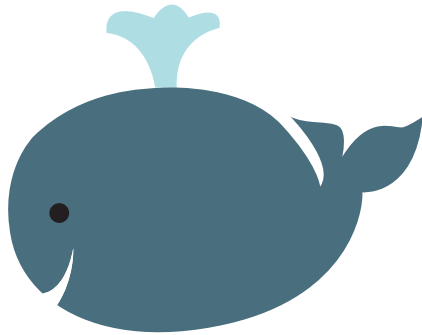
Want more workbooks? Join Education.com Plus to save time and money.
<http://www.education.com/education-plus/>

Bigger or Smaller?

Look at the sea creatures in each box,
and circle the one that is bigger!

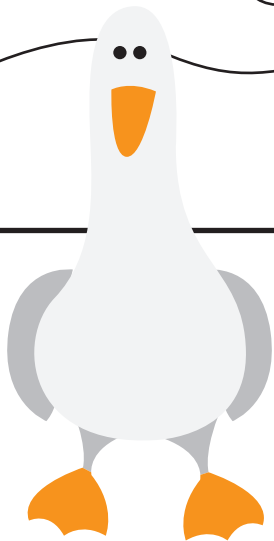
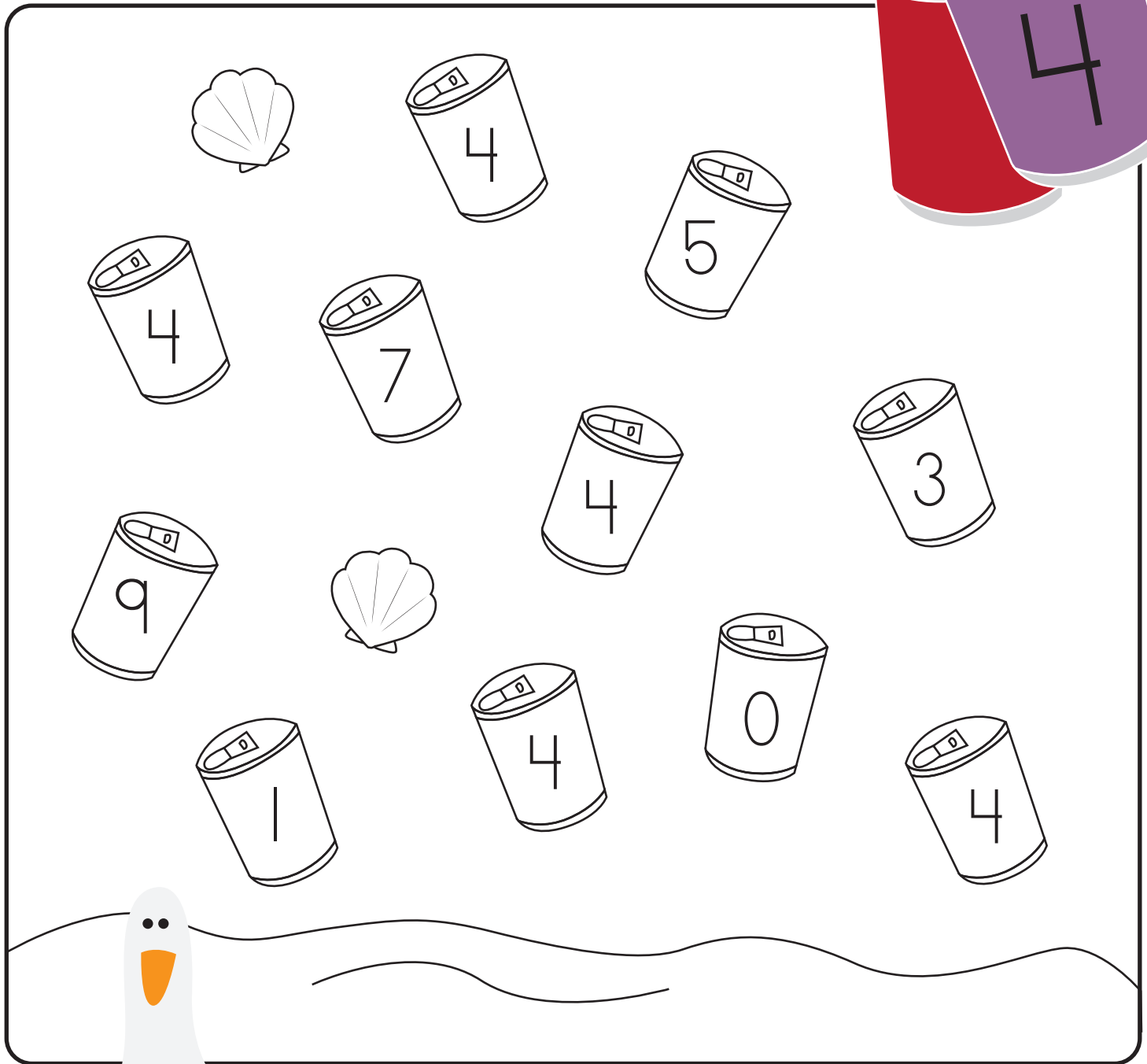
Whale Twins



Can you match each whale with her twin?

Recycling at the Beach

Will you help clean up the cans on this beach?
Color the cans with the number 4.



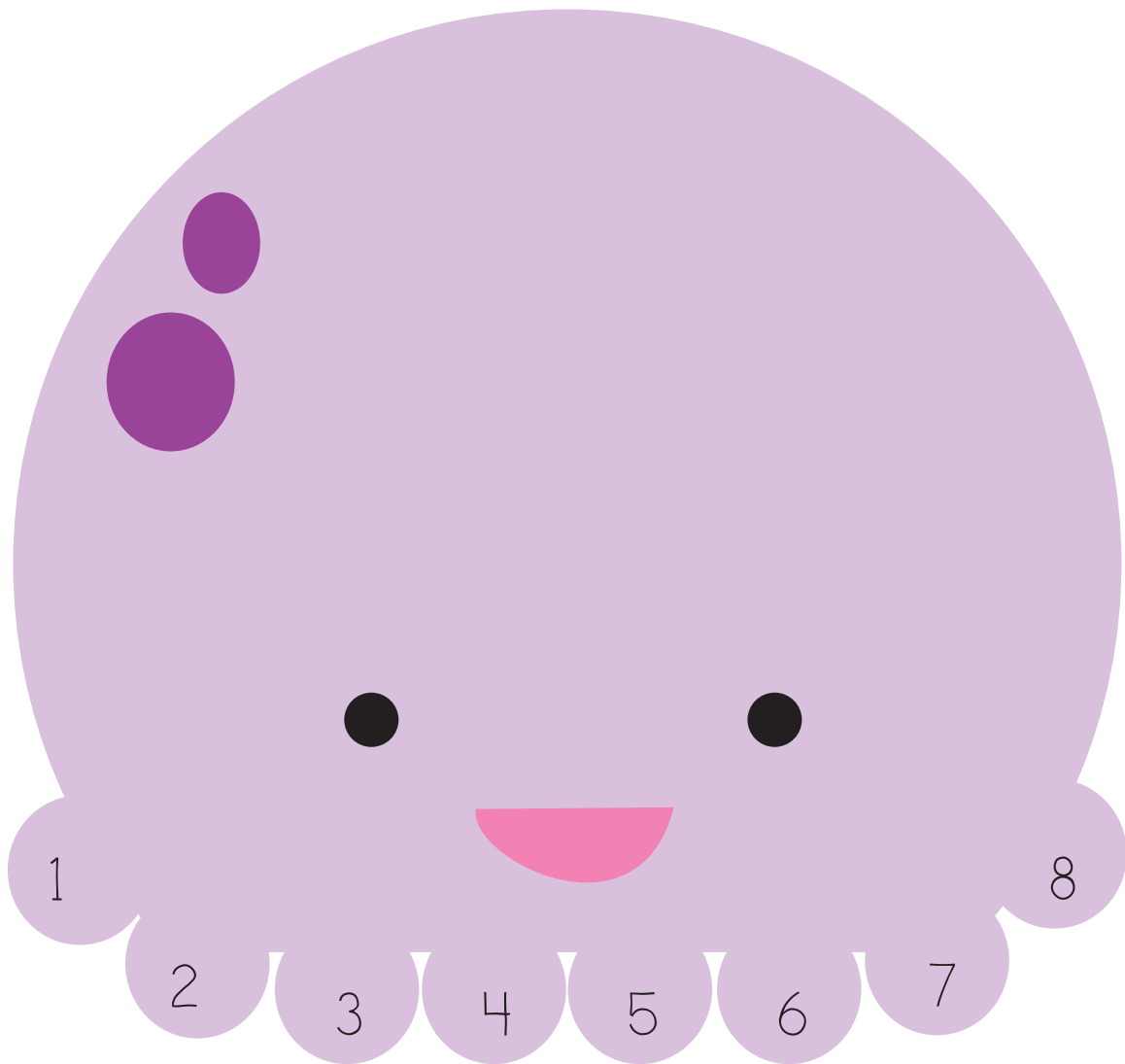
How many cans with the
number 4 did you find?

Oliver the Octopus

Did you know that an octopus has eight tentacles?

✂ Cut out the tentacles on the next page.

Then, glue them on Oliver the Octopus to finish the picture.





1



2



3



4



5



6



7

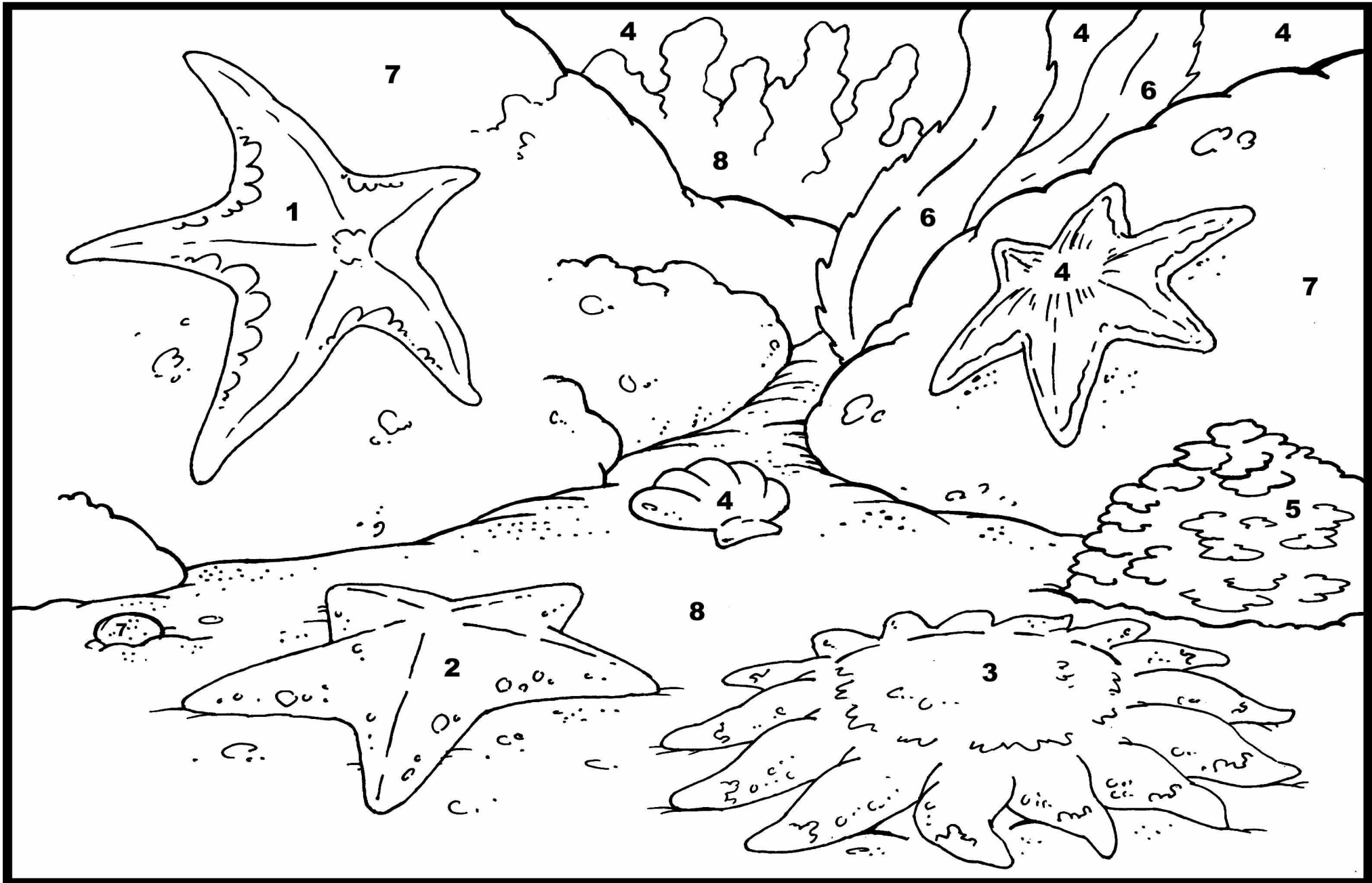


8

Color the Starfish

Color Code

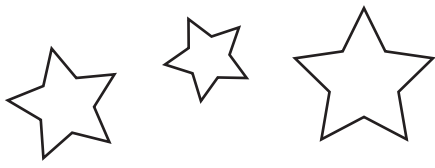
- | | | | |
|------------|------------|----------|-----------------|
| 1 - Pink | 2 - Orange | 3 - Red | 4 - Light Blue |
| 5 - Purple | 6 - Green | 7 - Blue | 8 - Light Green |



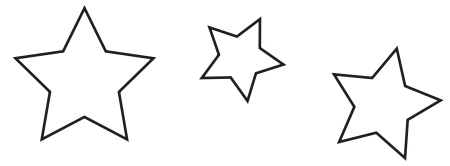
Find the Matching Set

Draw a line to match the buckets and shovels that have the same pattern.



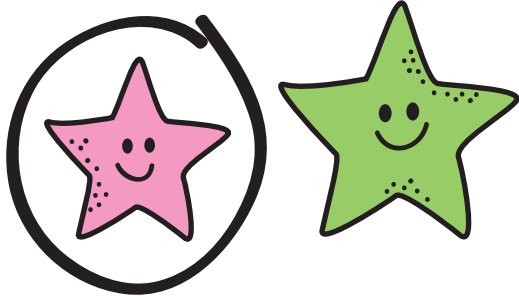


Let's Compare!

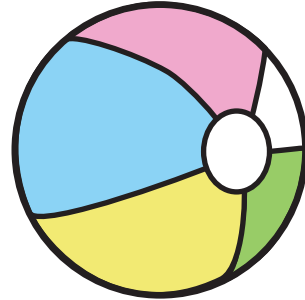


Please look at the pictures.
Then circle the correct answer.

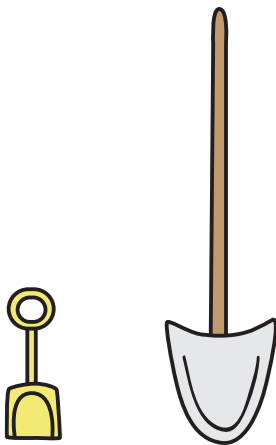
Example:



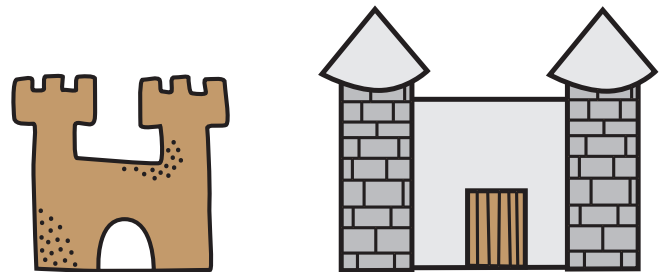
Which starfish is **shorter**?



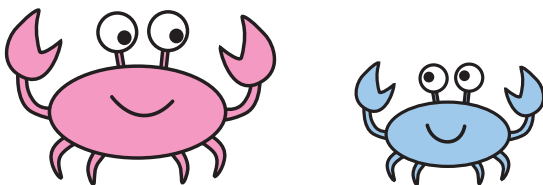
Which ball is **bigger**?



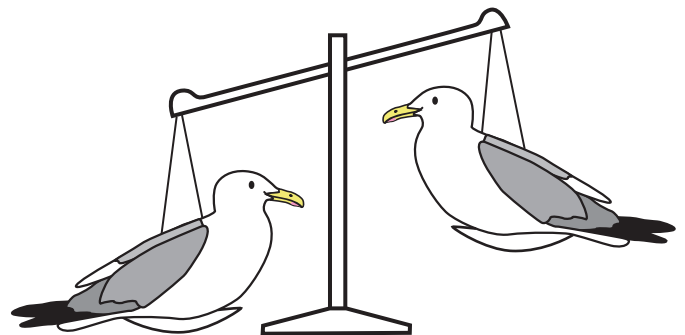
Which shovel is **longer**?



Which castle is **smaller**?

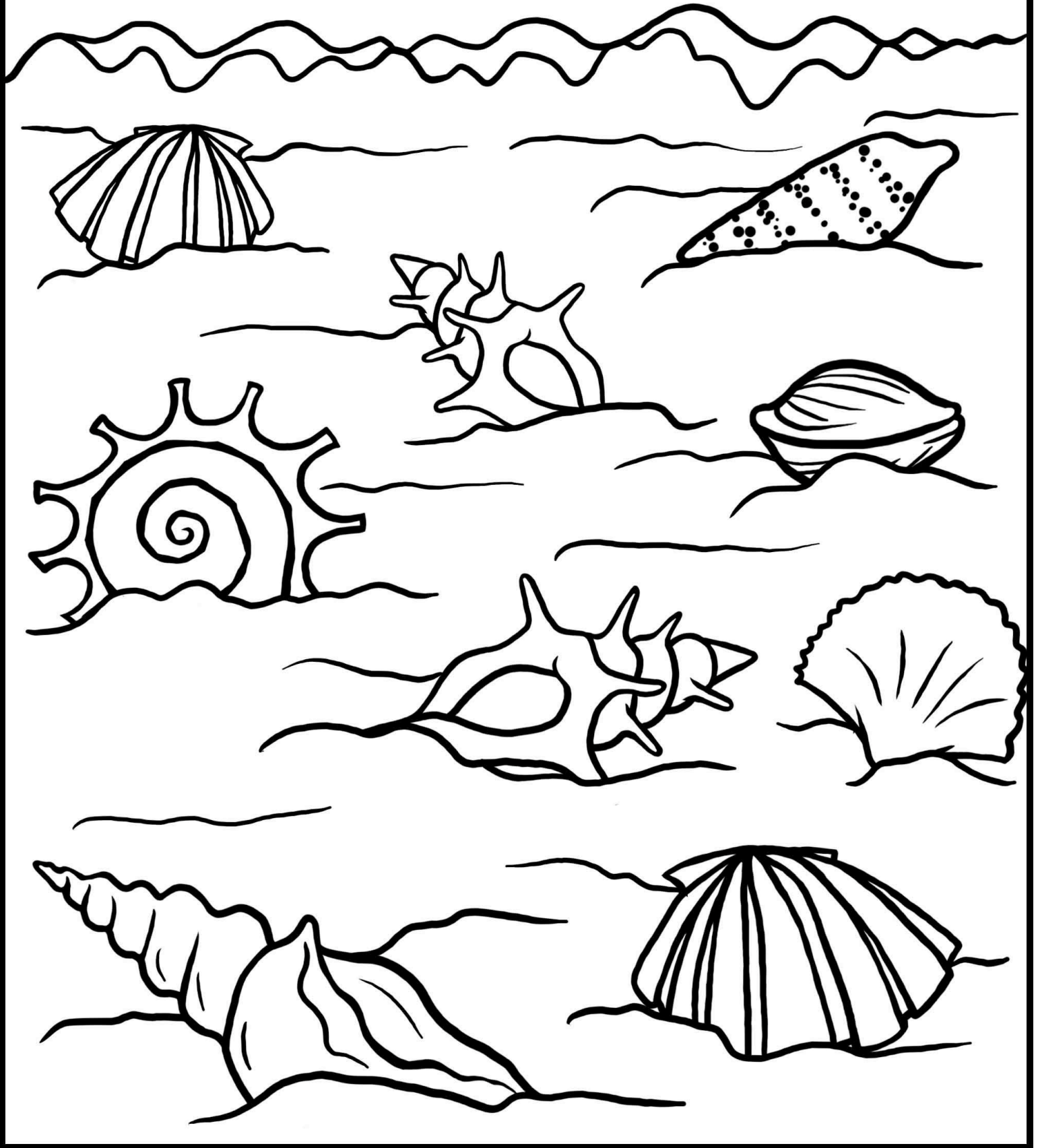


Which crab is **wider**?



Which seagull is **lighter**?

How many sea shells can you find?



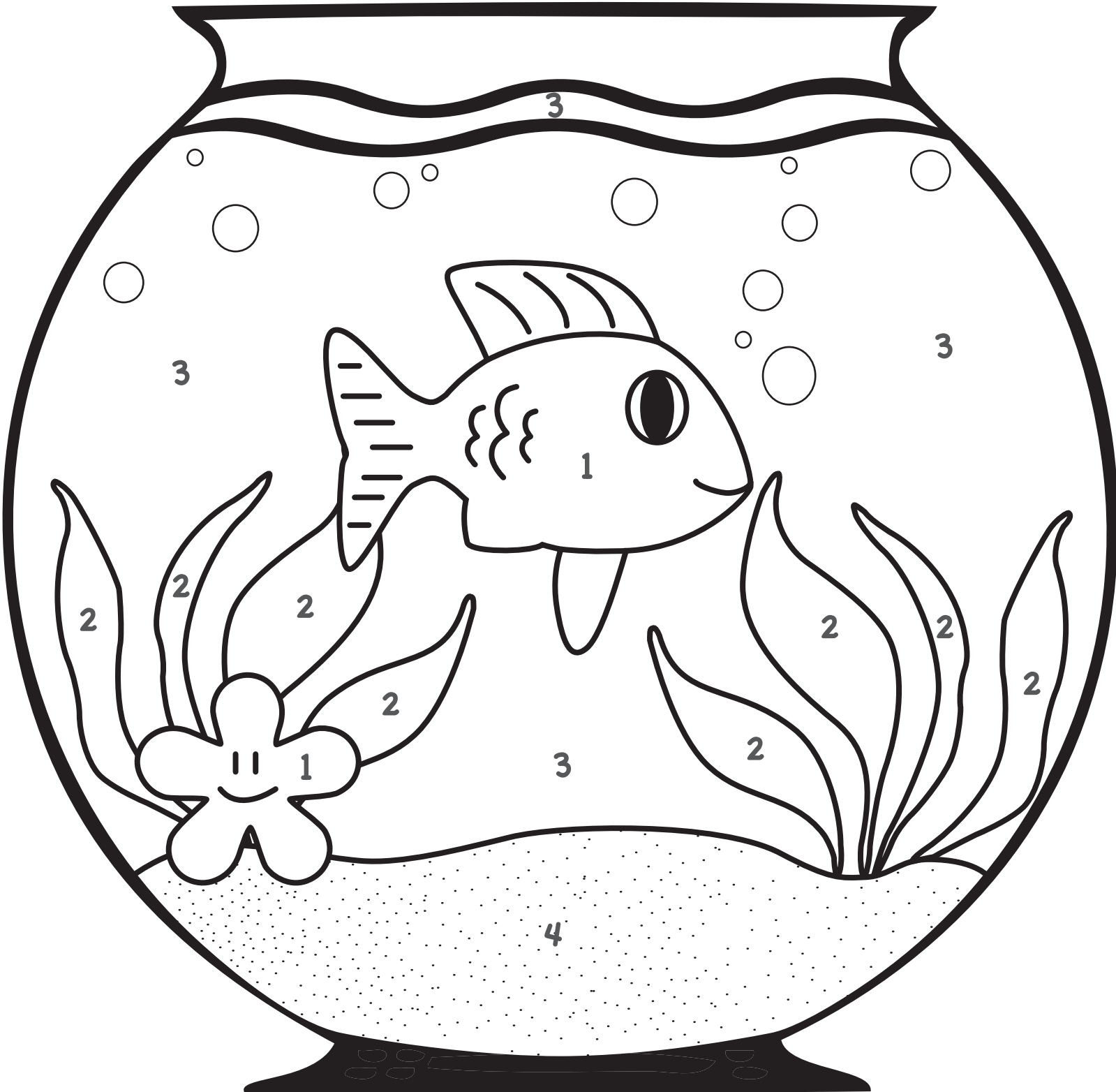
Color by Number

1-orange

2-green

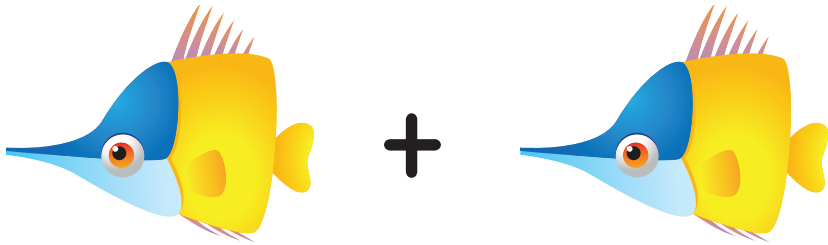
3-blue

4-brown

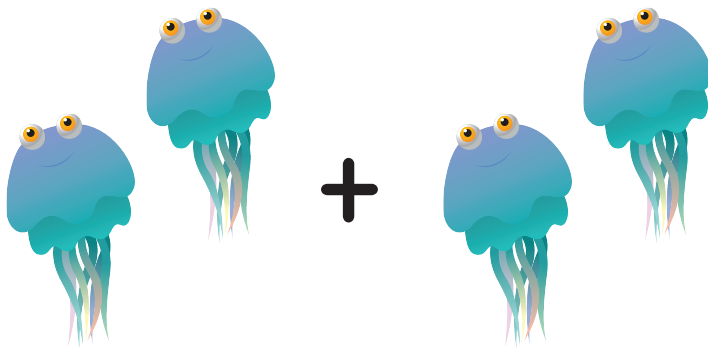


How Many Are There?

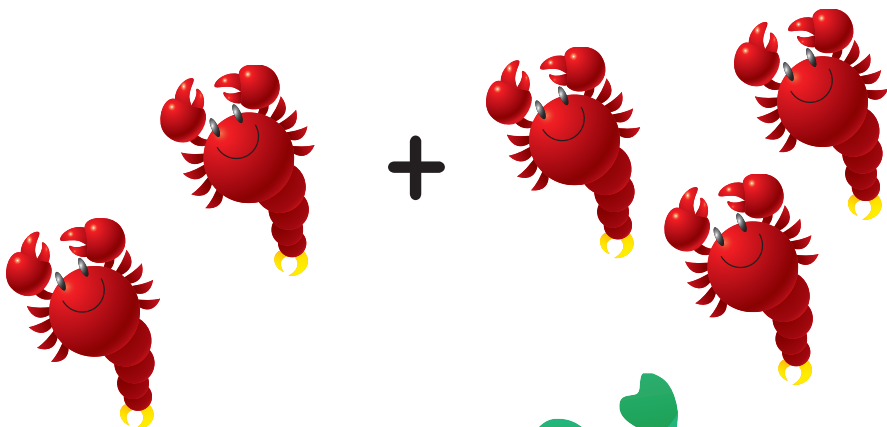
Add together the swimming animals and write down how many there are!



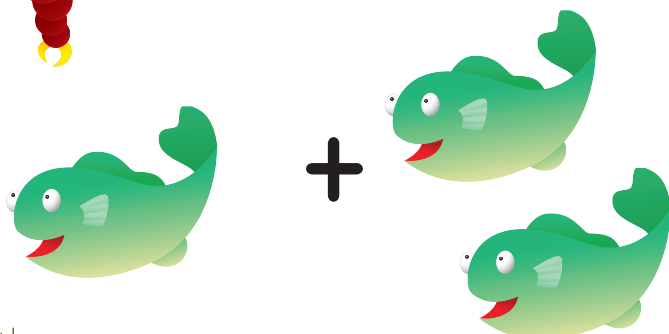
Two yellow and blue fish are shown on the left, followed by a plus sign, another two yellow and blue fish, and an equals sign. To the right of the equals sign is a set of three horizontal lines (top, middle dashed, bottom) with a dashed number 2 written between the middle and bottom lines.



Four blue jellyfish are shown on the left, followed by a plus sign, another four blue jellyfish, and an equals sign. To the right of the equals sign is a set of three horizontal lines (top, middle dashed, bottom) for writing the answer.



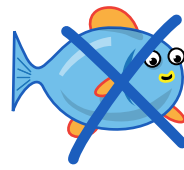
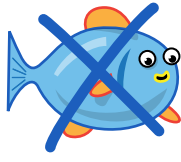
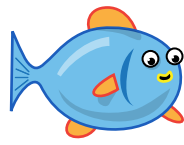
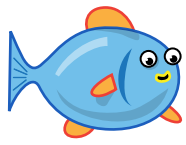
Five red crabs are shown on the left, followed by a plus sign, another five red crabs, and an equals sign. To the right of the equals sign is a set of three horizontal lines (top, middle dashed, bottom) for writing the answer.



Three green fish are shown on the left, followed by a plus sign, another three green fish, and an equals sign. To the right of the equals sign is a set of three horizontal lines (top, middle dashed, bottom) for writing the answer.



Count the sea creatures, then cross out the number of creatures you need to subtract. How many do you have left?
Then color in the art at the bottom of the page!



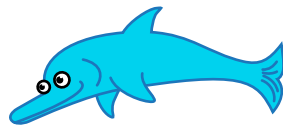
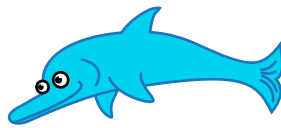
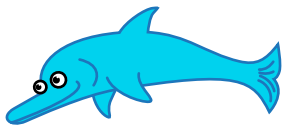
$$4 - 2 = \underline{2}$$



$$4 - 3 = \underline{\quad}$$



$$7 - 1 = \underline{\quad}$$



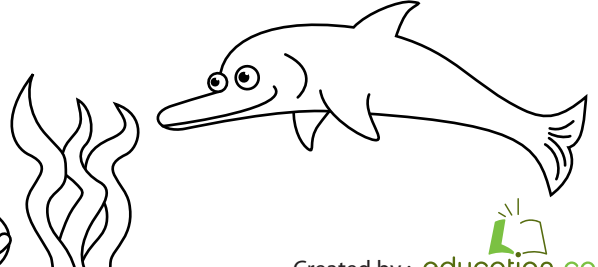
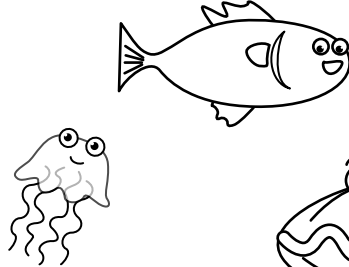
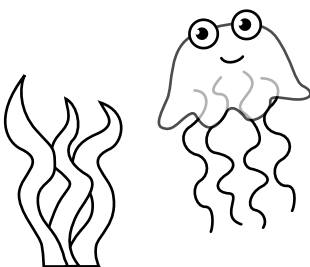
$$3 - 2 = \underline{\quad}$$



$$8 - 5 = \underline{\quad}$$



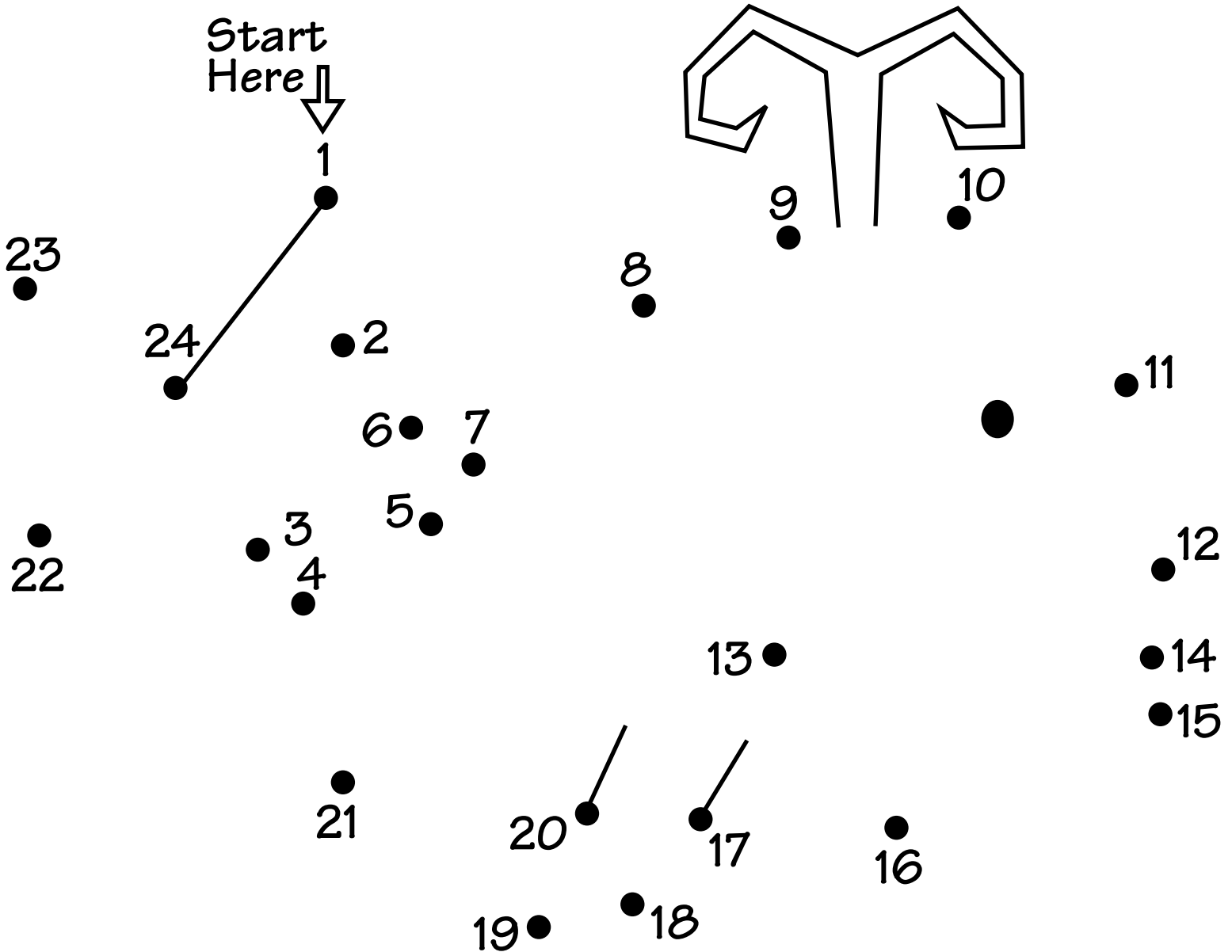
$$10 - 7 = \underline{\quad}$$



connect

the dots

Some very large mammals live in the ocean. Can you connect the dots to find the largest mammal on earth? Color it brightly when you find it.



Great job!

is an Education.com math superstar

