

# Anatomy ABCs: Human Body Vocabulary

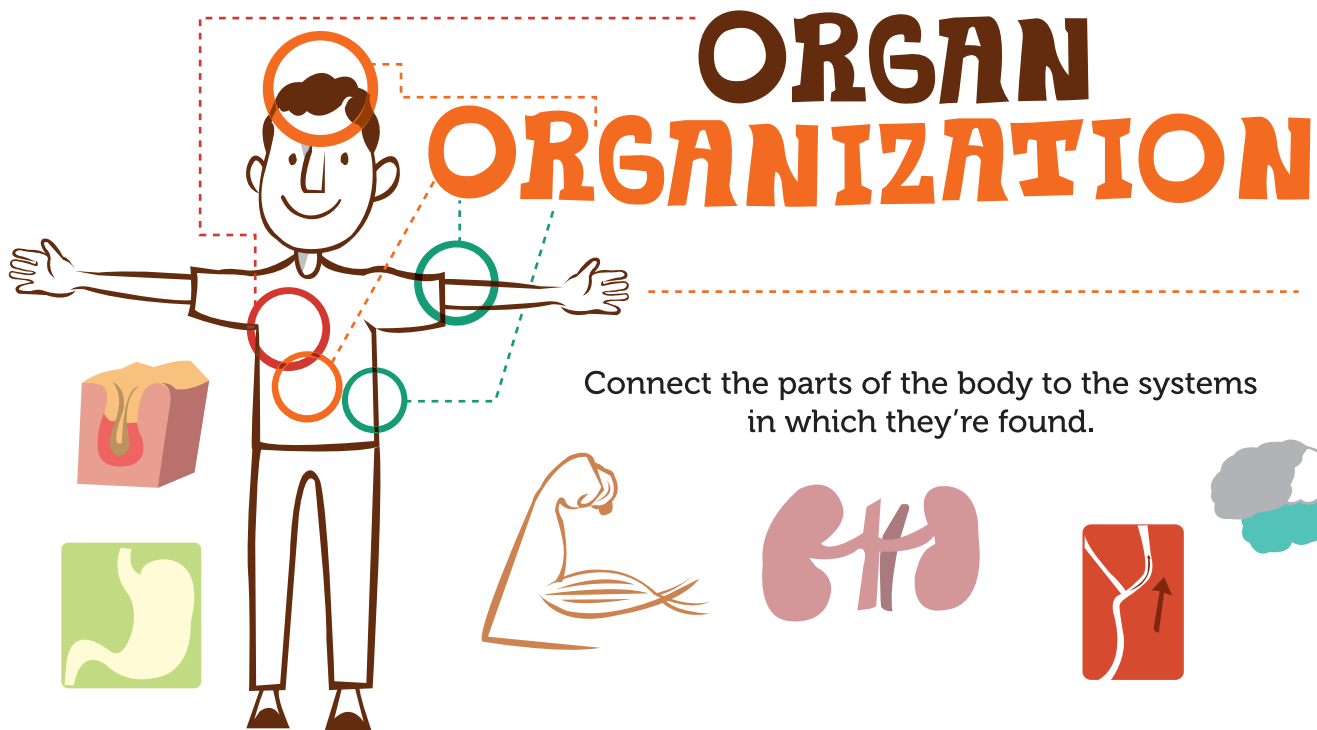
---

From organs and internal systems to our bones, this worksheet series covers vocabulary of the human body.

# Table of Contents

---

Organizing Organs  
Organ Scramble  
Bone Zone: Arms  
Bone Zone: Legs  
Bone Zone: Spine  
Bone Zone: Torso  
Bone Zone: Skull  
Bone Zone: Hands and Feet



glands

muscular system

arteries, veins

urinary system

biceps, diaphragm

digestive system

kidneys

endocrine system

cerebrum, cerebellum

circulatory system

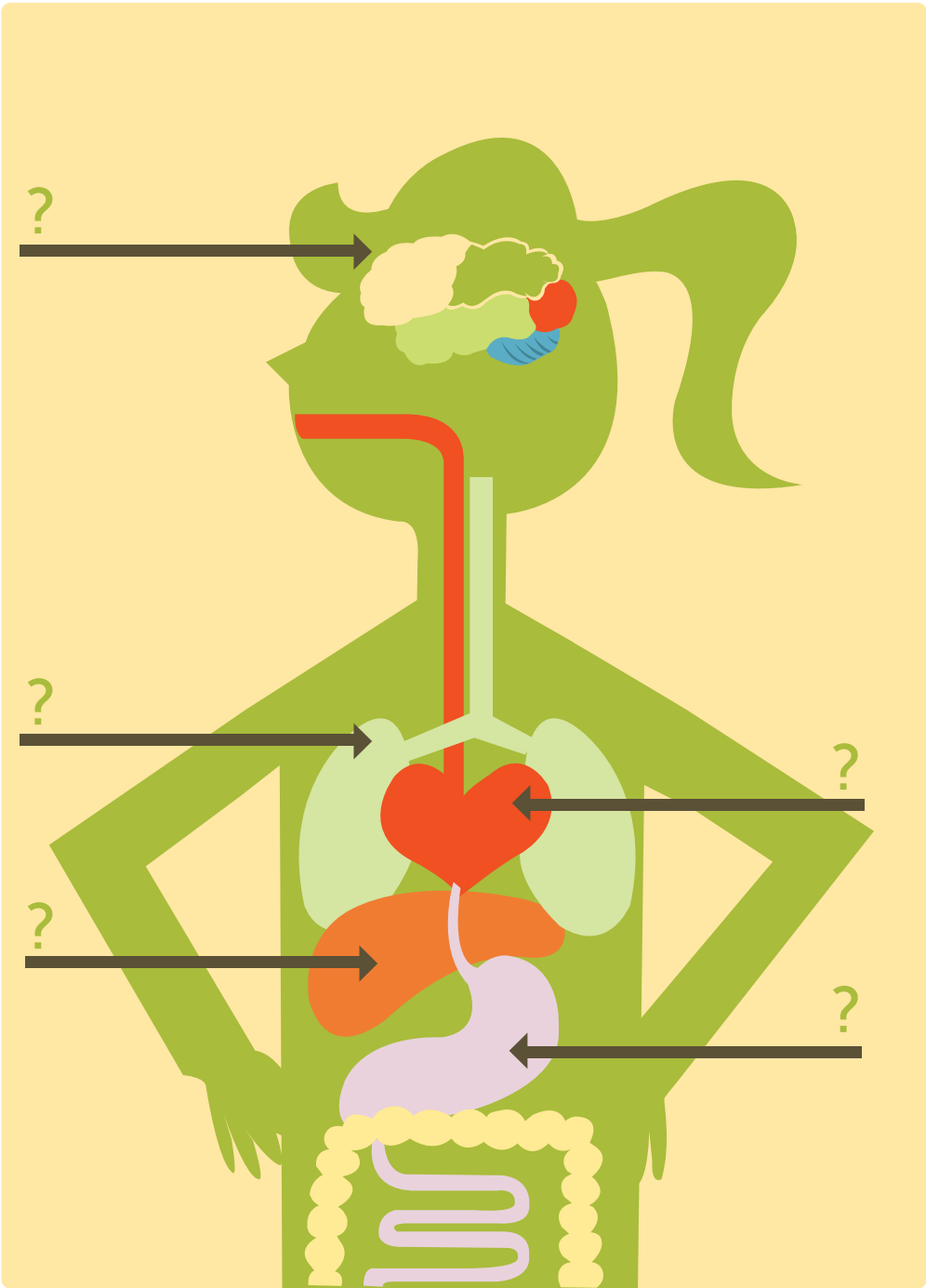
stomach, intestines

nervous system

# ORGAN MATCH GAME

There are five words scrambled below. Can you unscramble the words and match each one with its place in the human body?

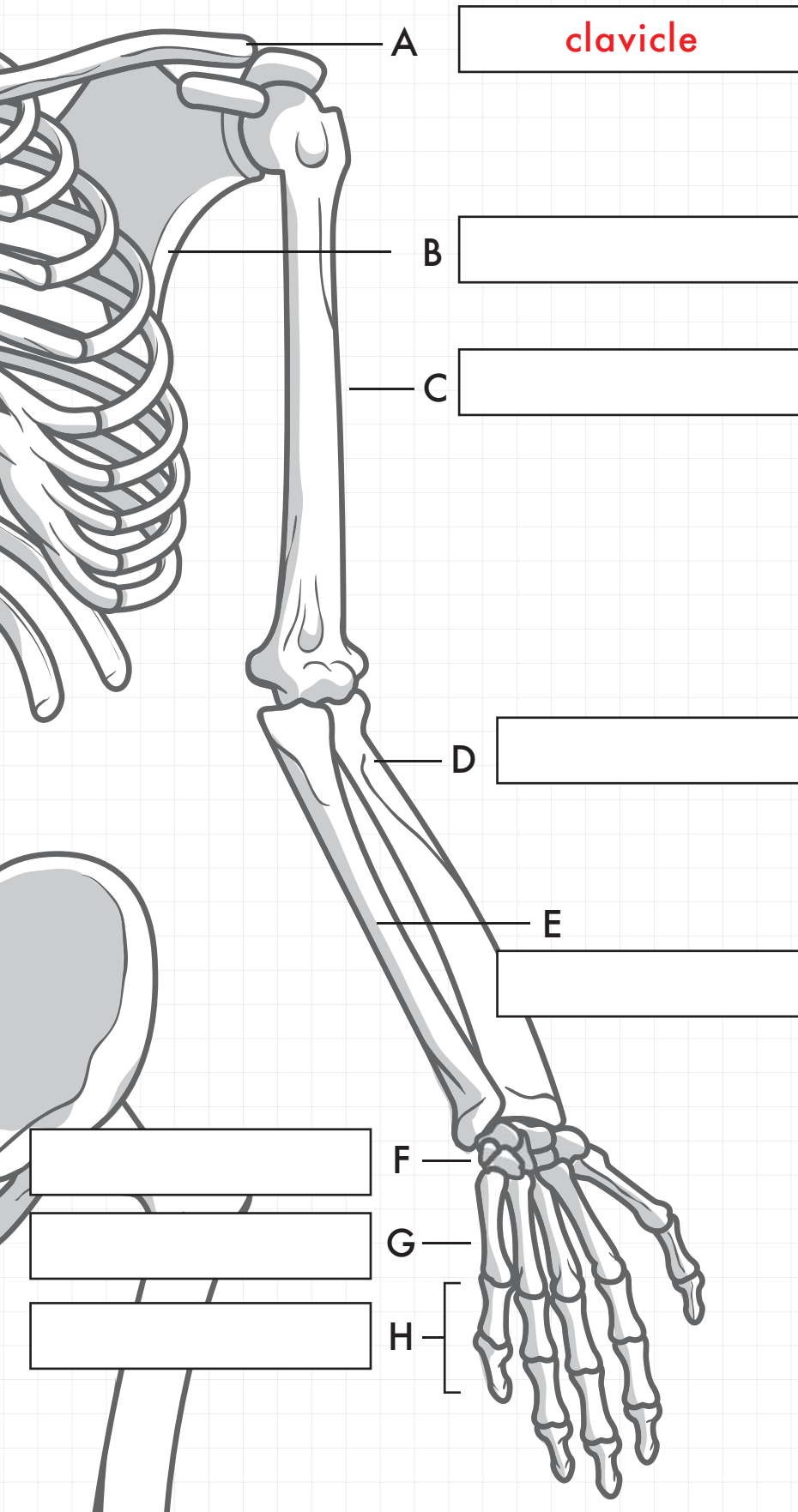
- etrha
- csmaoth
- velri
- nabir
- lnsgu





# the BONE ZONE

## Arms



A

B

C

D

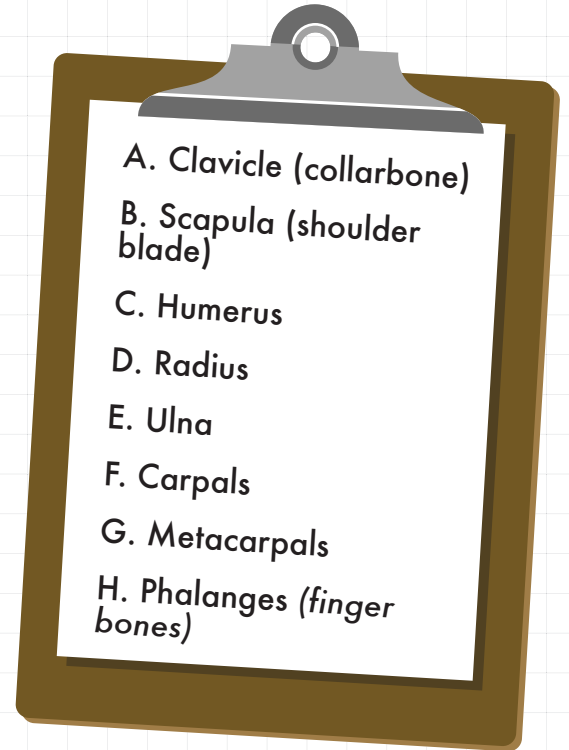
E

F

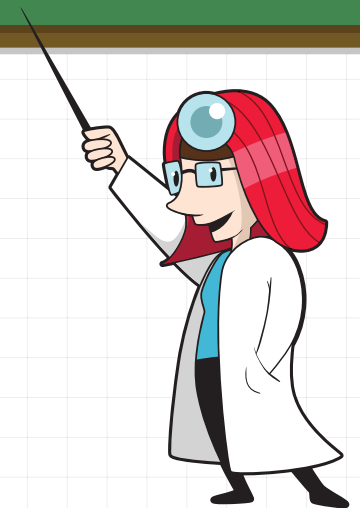
G

H

Write the correct label for each bone in the given box. Refer to the clipboard for the bones' names.



**FACT:** Your forearm (the segment from your elbow to your wrist) is the same length as your foot.





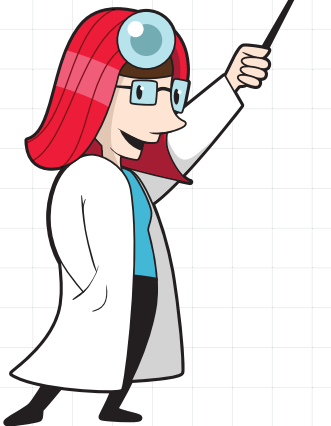
# The BONE ZONE

Legs

Write the correct label for each bone in the given box. Refer to the clipboard for the bones' names.

- A. Femur
- B. Patella (knee cap)
- C. Fibula
- D. Tibia (shin bone)
- E. Tarsal bones
- F. Metatarsals
- G. Phalanges (toe bones)

**FACT:** The femur is the largest and strongest bone in the human body!



femur

A —

B —

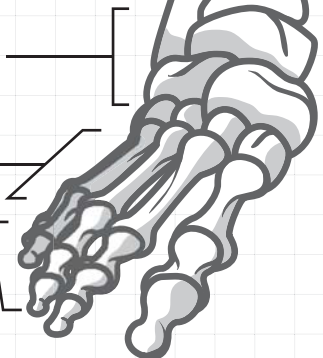
C —

D —

E —

F —

G —

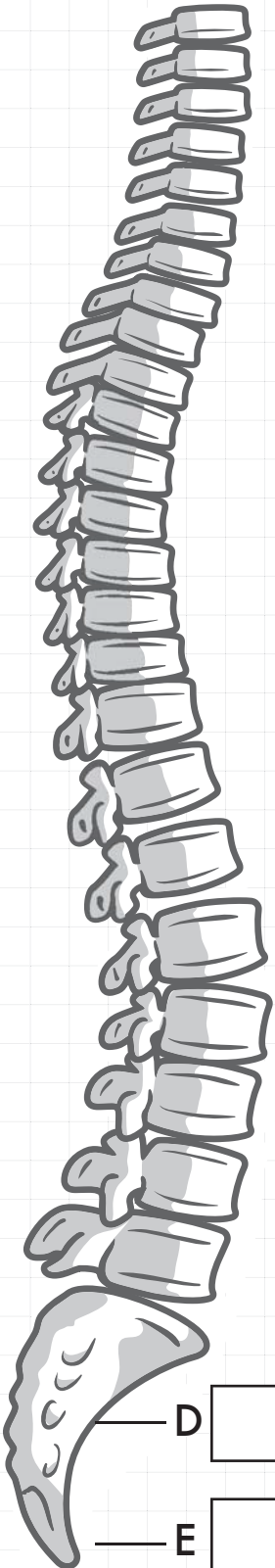




# the BONE ZONE

## Spine

Write the correct label for each bone in the given box. Refer to the clipboard for the bones' names.



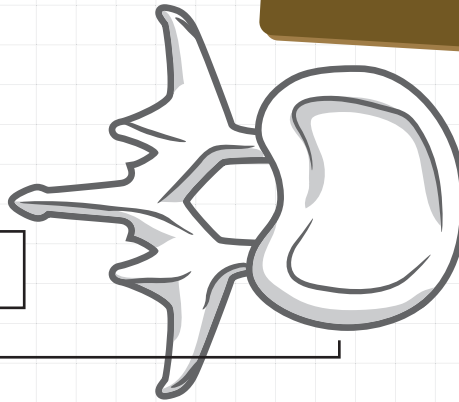
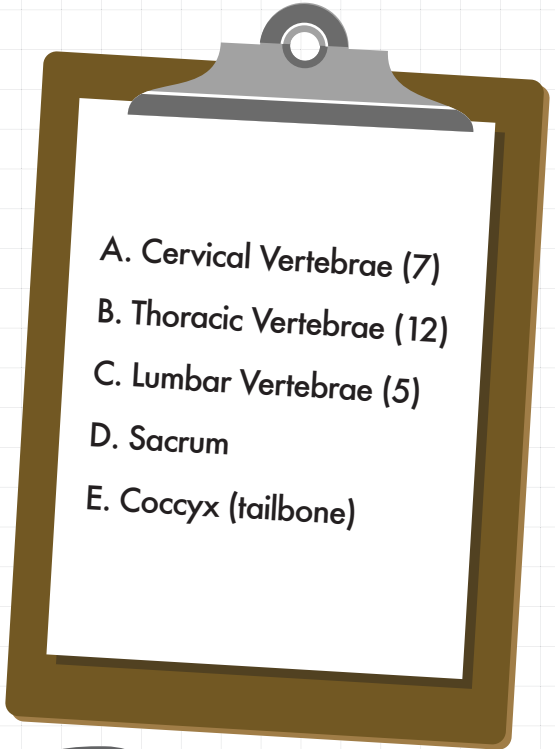
A

B

C

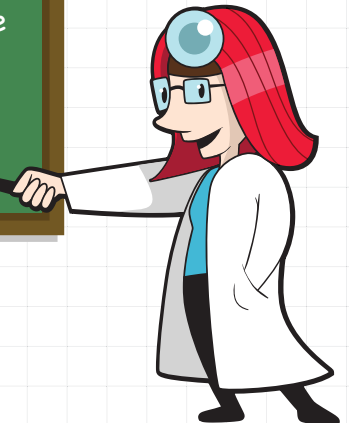
D

E



vertebrae top view

**FACT:** Over the course of a day, the spine shrinks about ½ inch due to daily activities like walking and sitting down. It regains its height during sleep.



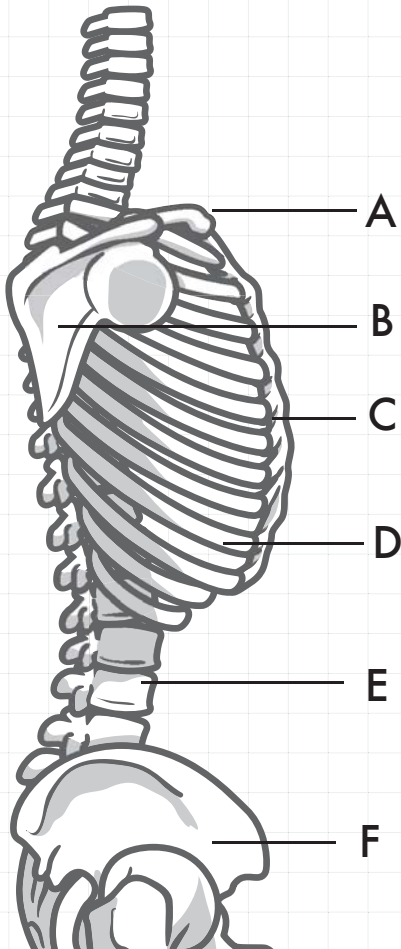
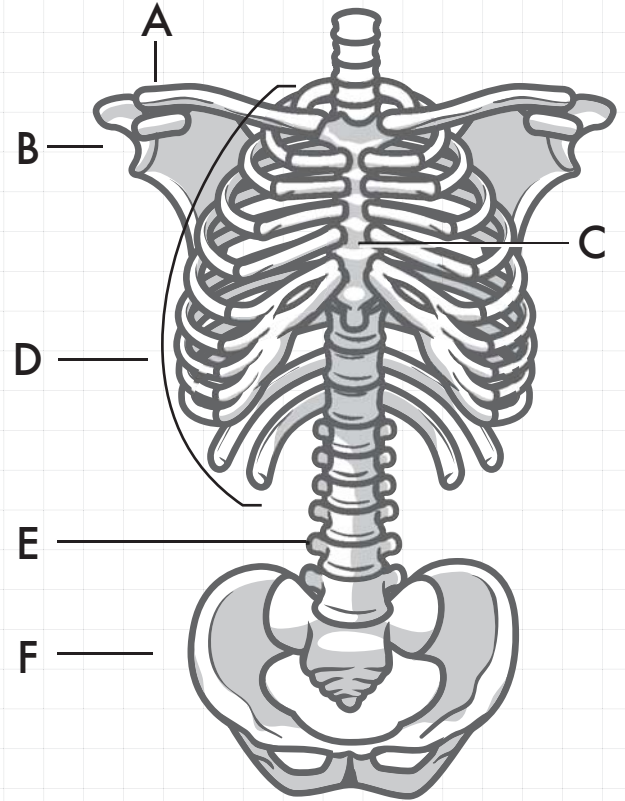
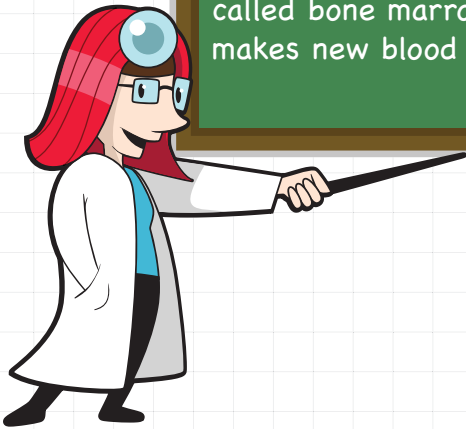


# the BONE ZONE

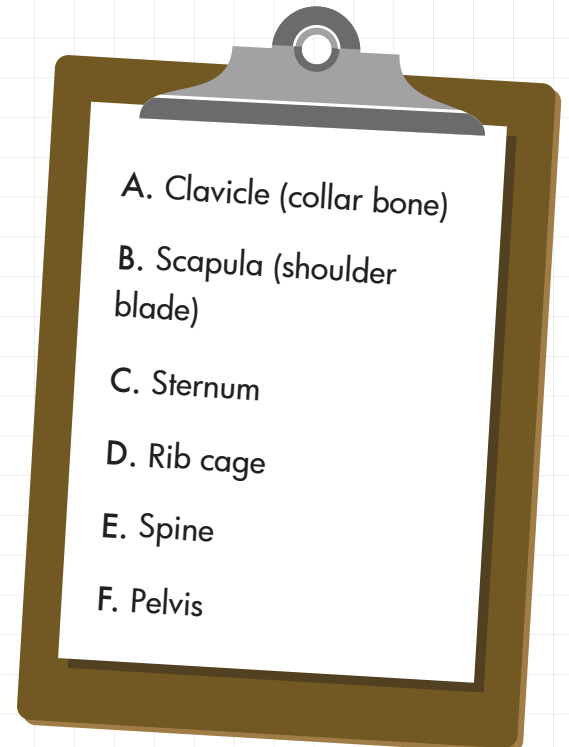
## Torso

Write the correct label for each bone in the given box. Refer to the clipboard for the bones' names.

**FACT:** Even though bones are very hard on the outside, they are filled with jelly-like substance called bone marrow. Bone marrow makes new blood cells.



|   |          |
|---|----------|
| A | clavicle |
| B |          |
| C |          |
| D |          |
| E |          |
| F |          |





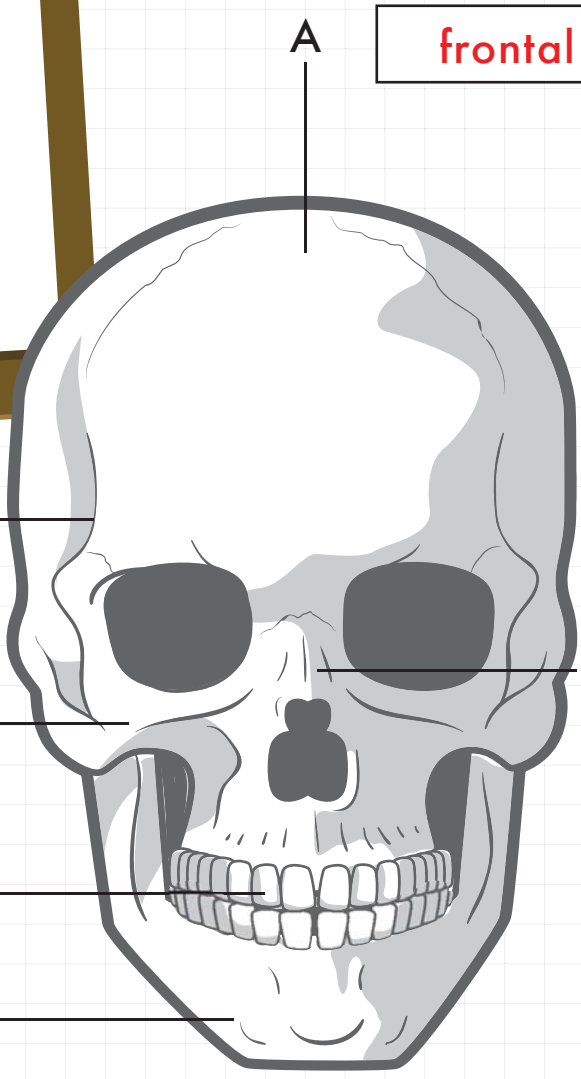
# the BONE ZONE

Skull

Write the correct label for each bone in the given box. Refer to the clipboard for the bones' names.

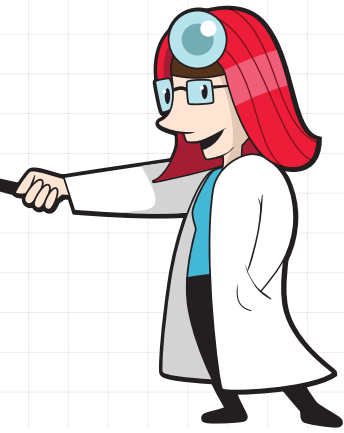
Clipboard with the following list:

- A. Frontal bone
- B. Temporal bone (temple)
- C. Zygomatic bone (cheek bone)
- D. Nasal bone
- E. Teeth
- F. Mandible (jaw bone)



frontal bone

**FACT:** Enamel, the material covering each tooth, is harder than bones. In fact, it is the hardest material in the human body.



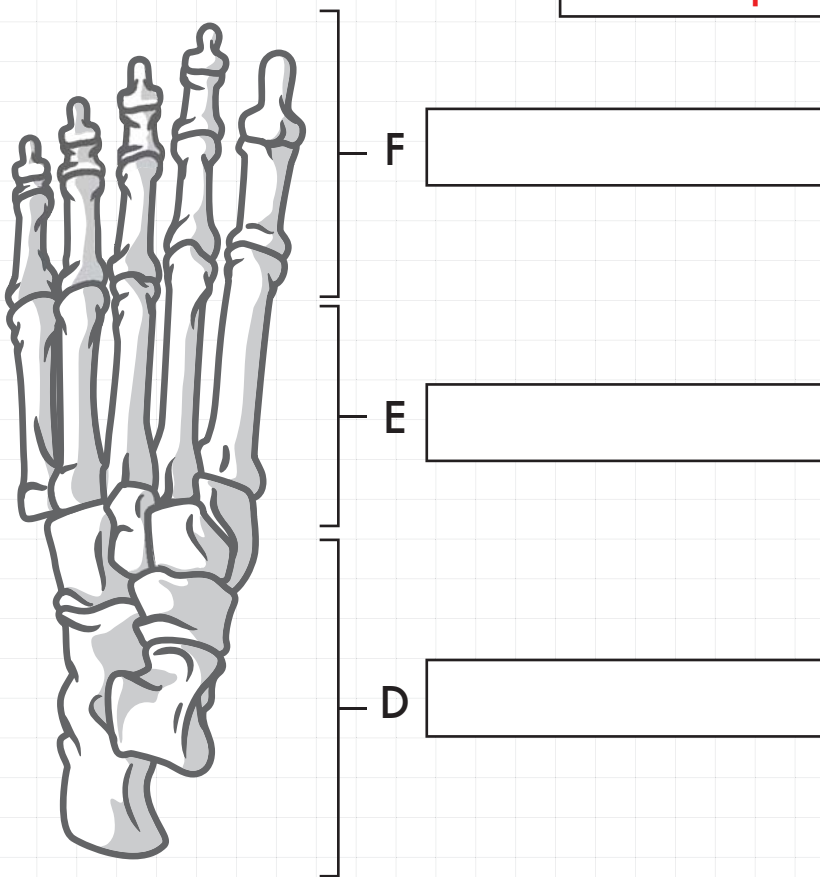
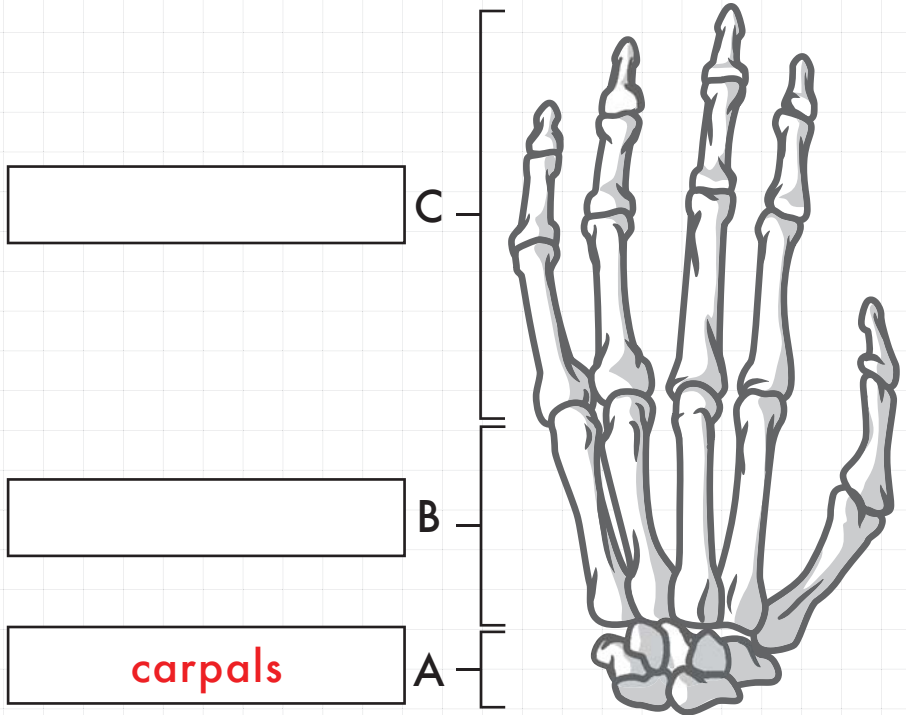


# the BONE ZONE

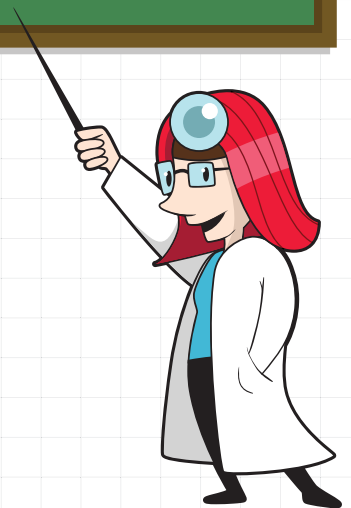
## Hands & Feet

Write the correct label for each bone in the given box. Refer to the clipboard for the bones' names.

- A. Carpals (wrist)
- B. Metacarpals (palm bones)
- C. Phalanges (finger bones)
- D. Tarsals
- E. Metatarsals
- F. Phalanges (toe bones)



**FACT:** With 26 bones in each foot and 27 bones in each hand, over half of our bones are in our hands and feet!



# Answer Sheets

---

## **Anatomy ABCs: Human Body Vocabulary**

Organizing Organs  
Organ Scramble

# Answers



|                      |   |                    |
|----------------------|---|--------------------|
| glands               | — | endocrine system   |
| arteries, veins      | — | circulatory system |
| biceps, diaphragm    | — | muscular system    |
| kidneys              | — | urinary system     |
| cerebrum, cerebellum | — | nervous system     |
| stomach, intestines  | — | digestive system   |

# ORGAN MATCH GAME

## Answers

There are five words scrambled below. Can you unscramble the words and match each one with its place in the human body?

etrha

csmaoth

velri

nabir

lnsgu

